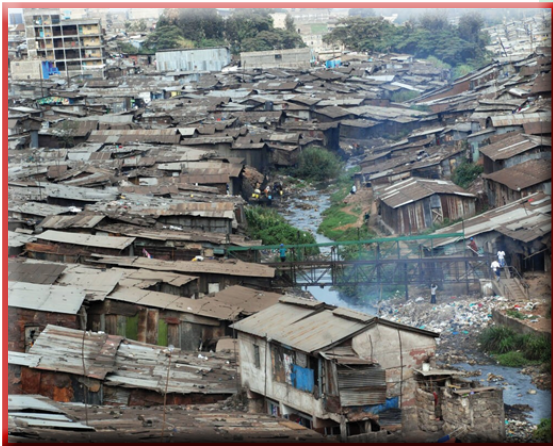
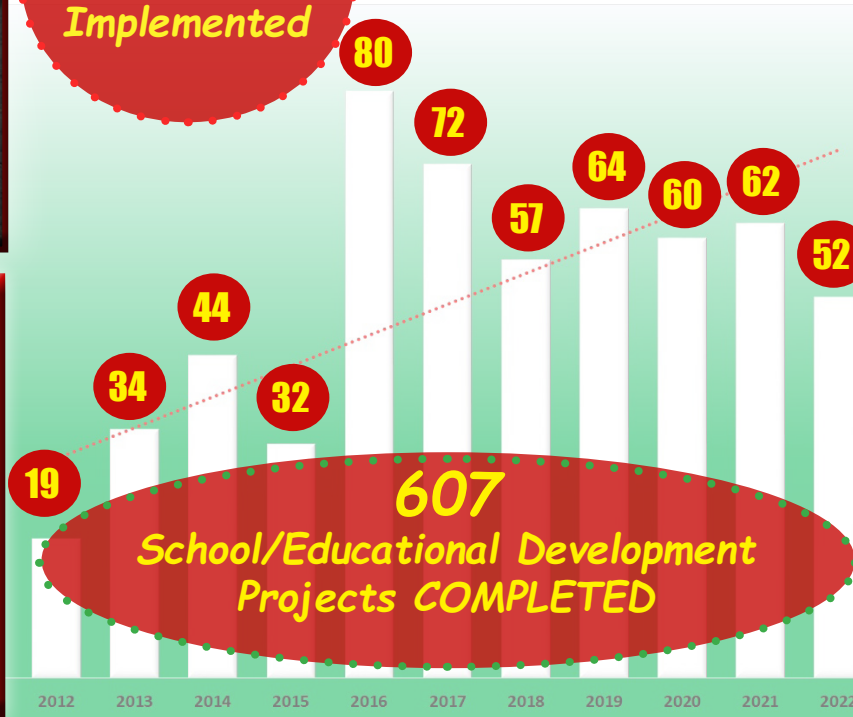


# 2009-2022 SHALOM-SCCRR RESULTS AND ACHIEVEMENTS



**860**  
Peacebuilding  
Interventions  
Implemented



**Conflict Transformation & Peacebuilding**

**Schools/Educational Development**

**Peace Education Syllabus Implementation in Schools**

**Community Development & Health Support Interventions**

## ENDORSEMENTS OF SHALOM-SCCRR HUMANITARIAN-PEACE-DEVELOPMENT WORK

---

**Fergal Keane, BBC African Editor**, writing recently about Shalom in the **Irish Independent** said:  
*“Kenya needs them in its slums and beleaguered western villages,... what they do here matters to all of Africa...”*

---

**International Development Consultant, Mr. Mike Williams**, reviewing Shalom-SCCRR’s methodology and organizational strategy stated:

*“Shalom’s contextually driven, rigorous but adaptable and forward-looking methodology represents a model approach towards peace-building in highly complex situations, such as those that pertain in Northern Kenya. The approach, with its emphasis on community leadership, stakeholder participation, high technical competency, logic models, results frameworks, stories of change and advocacy linkages also reflects current best practice within both the Peacebuilding and development sectors.”*

---

---

### **UN Recommendation:**

*“Shalom Center for Conflict Resolution and Reconciliation is well known to the United Nations Information Center (UNIC). The Shalom Center for Conflict Resolution and Reconciliation works to end the cycle of violence in the tribal lands of Eastern Africa ... We therefore, have no hesitation in recommending them for the United Nations Department of Public Information (UNDPI) accreditation, with the confidence that they will be a great asset and add value to the United Nations work.”*

---

### **IGAD’s endorsement of Shalom-SCCRR’s to the UN, 2018**

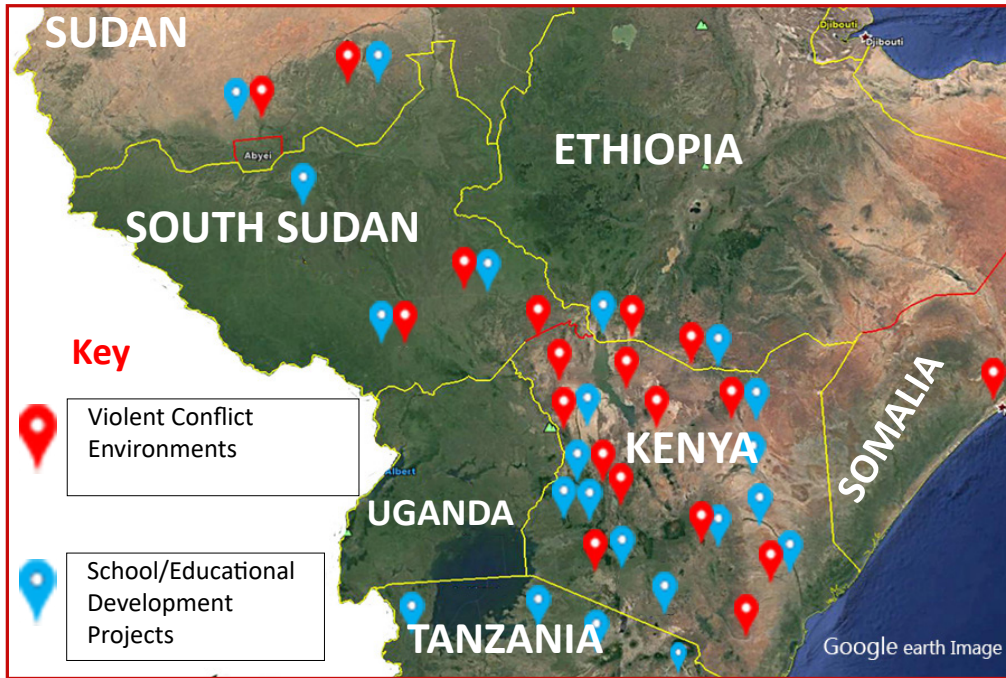
*“Shalom distinguishes itself by its unique way of working, incorporating theory through research and practice through training on skills in conflict resolution and transformation. The organisation has a growing reputation for its peace-building work, professionalism, high research ability, and conflict sensitivity. Its well-structured training modules on analytical skills and knowledge of peace-building is a major contributor to our work.... Shalom is unquestionably an exceptional organisation to partner with. Shalom's experience in the region suggests that the UN and it would greatly benefit from this association.”*

---

# MAP OF SHALOM-SCRR HUMANITARIAN-PEACE-DEVELOPMENT CONTEXT & INTERVENTIONS IN EASTERN AFRICA

**WHERE:** The remote Kenya-Uganda-South Sudan-Ethiopia-Somalia border interfaces, Sudan, and remote urban settlements

**WHY:** Inter-ethnic conflicts and Religious Ideological Extremism in **36** life-threatening under-developed locations



## CONFLICT ENVIRONMENT/CONFLICT ISSUES

- Arid and Semi-arid lands (see the brownish spaces on the map) - hot and dry with a mean annual rainfall of 200mm.
- Competition over scarce grazing fields, water resources and pasture.
- Violent livestock raids for: restocking, commercial, prestige and bridewealth.
- Persistent killing, maiming, displacement and destruction of infrastructure/property.
- Violent religious ideological extremism in the urban slums.
- Inter-ethnic conflicts within and across Counties and Countries interfaces.
- Protracted insecurity and lawlessness catalysed by limited or no state presence.
- Infrastructure insecurity creating environment for crime, and violent inter-ethnic conflict.
- Steady rising levels of poverty manifested through shortage of basic human needs, core resources necessary for communities actualizing their potential.
- Local populations especially women and children suffering from extreme hunger (highest food insecurity), malnutrition and trauma.
- Protracted drought and famine causing grave food insecurity.
- Climate change, ecological degradation leading to overgrazing and competition over limited resources.
- Structural violence preventing communities from meeting their basic needs, benefiting from social, economic and political mainstream development, human rights, and fundamental freedoms.
- Radicalization and violent Religious extremism in informal urban settlements (slums).

## SCHOOL/EDUCATIONAL INFRASTRUCTURAL GAPS

- Low: access to formal education (large number of children out-of-school), retention and transition rates.
- Nomadic way of life by the pastoralists consequently affecting continuity and school attendance.
- Dilapidated physical school infrastructure.
- Difficult and dangerous terrains with long walking distances for children to cover.
- Shortage of adequate instructional and learning materials.
- Still existing educational disparities particularly impacting on children from the pastoral communities and informal urban settlements.
- Cultures that undermine education of the girl-child, and condone forced marriages.
- Low girls' enrollment and transition rates to higher education.
- Lack of clean drinking water and basic sanitation causing high number of water borne diseases among the school children.

## HEALTH INFRASTRUCTURAL GAPS

- Few health facilities compared to the land mass and local population.
- Dilapidated or no physical infrastructure.
- Low accessibility of health services because of long distances to health facilities further compounded by poor road network and violent inter-ethnic/communal conflicts.
- High maternal mortality among the marginalized pastoral communities.

# SHALOM-SCCRR 2009-2022 ACHIEVEMENTS SUMMARY IN NUMBERS

## *Our Transformative Humanitarian-Peace-Development Interventions in Eastern Africa*

### CONFLICT TRANSFORMATION AND PEACEBUILDING OUTPUTS

**24,644** influential stakeholders and grassroots peace actors empowered with analytical skills and techniques for Conflict Transformation and Peacebuilding through **860** Training Workshops in **36** Conflict Environments in Kenya, and at the Kenya-Ethiopia-South Sudan-Uganda interface.

**43%** Women active participation (up from 2% when Shalom launched) in Shalom-SCCRR Conflict Transformation and Peacebuilding interventions.

**Shalom-SCCRR Empowerment Center (SEC)** empowering residents from **10** Urban Informal Settlements/Slums, as well as in marginalized conflict regions in the semi-arid terrains where Kenya interfaces with Ethiopia, South Sudan and Uganda.

**5** Community-focused Peace Centers Established/Supported in Kenya and South Sudan conflict areas.

**13 Years** of the **Shalom-SCCRR University Elective Course on Conflict Resolution and Reconciliation** at **Tangaza University College, Nairobi, Kenya; empowering hundreds of Students of all faiths** from Africa, Europe, Asia and Latin America with **conflict transformation skills and peace building techniques**.

### SCHOOL/EDUCATIONAL DEVELOPMENT PROJECTS OUTPUTS

**607** School/Educational Development Projects completed: classrooms & accommodation, solar lighting, sanitary items for girls, books, desks, water etc.

**330** School/Educational institutions supported in conflict environments and marginalized areas in 31 Counties in Kenya, Regions in Sudan, South Sudan, Ethiopia and Tanzania.

**191,496** pupils and students (**92,155 [48.1%] girls; 99,341 [51.9%] boys**) beneficiaries of Shalom-SCCRR projects.

**3** Pastoralist/Shepherd schools supported—benefiting youth missing on formal education/schooling.

**1** University and **3** Vocational/Tertiary institutions provided with educational materials in Kenya and South Sudan.

### COMMUNITY DEVELOPMENT AND HEALTH SUPPORT INTERVENTIONS

**36** Health/Medical centers supported with vital medical equipment in the marginalized and conflict areas of Northern Kenya and South Sudan.

**14** Community-based projects completed: Water piping, Solar-powered water systems, Community Education Centers etc., benefiting pastoralist communities in conflict and marginalized areas.

**4** interventions to prevent Human Trafficking in Eastern Africa supported.

### PEACE EDUCATION OUTPUTS

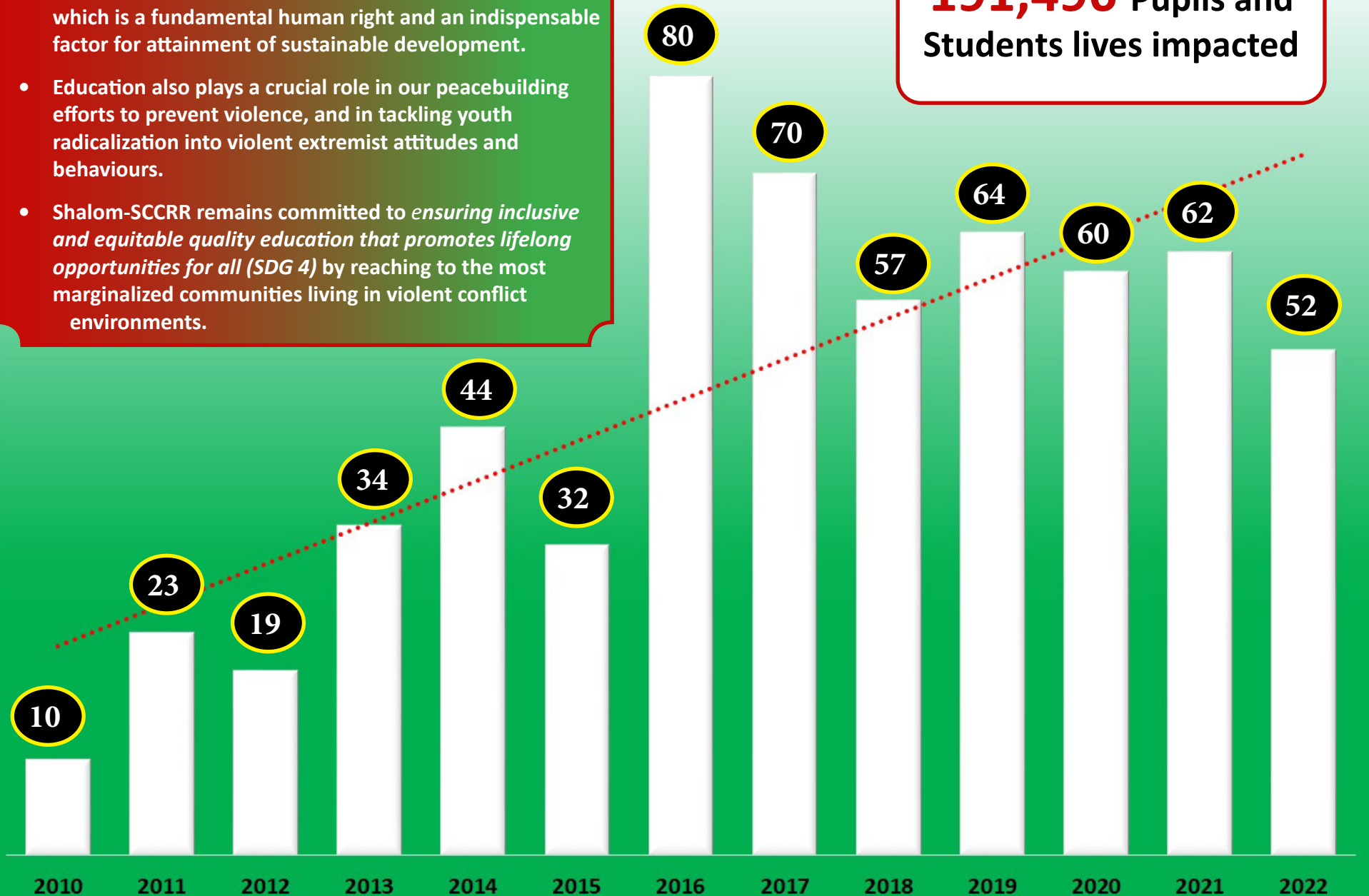
**54** Shalom School Peace Clubs formed and members (**13,092: 7,182, (55%) girls; 5,910 (45%) boys**) empowered with analytical skills and techniques in peacebuilding.

**160,809** pupils and students engaged in Conflict Transformation in schools and at community level through Shalom-SCCRR Peace Education Syllabus.

**103** Peace Club Patrons trained to facilitate Peace Education in schools and administrate Shalom-SCCRR supported School Peace Clubs.

- Through School educational development projects Shalom-SCRR affirms the intrinsic value of Education which is a fundamental human right and an indispensable factor for attainment of sustainable development.
- Education also plays a crucial role in our peacebuilding efforts to prevent violence, and in tackling youth radicalization into violent extremist attitudes and behaviours.
- Shalom-SCRR remains committed to *ensuring inclusive and equitable quality education that promotes lifelong opportunities for all (SDG 4)* by reaching to the most marginalized communities living in violent conflict environments.

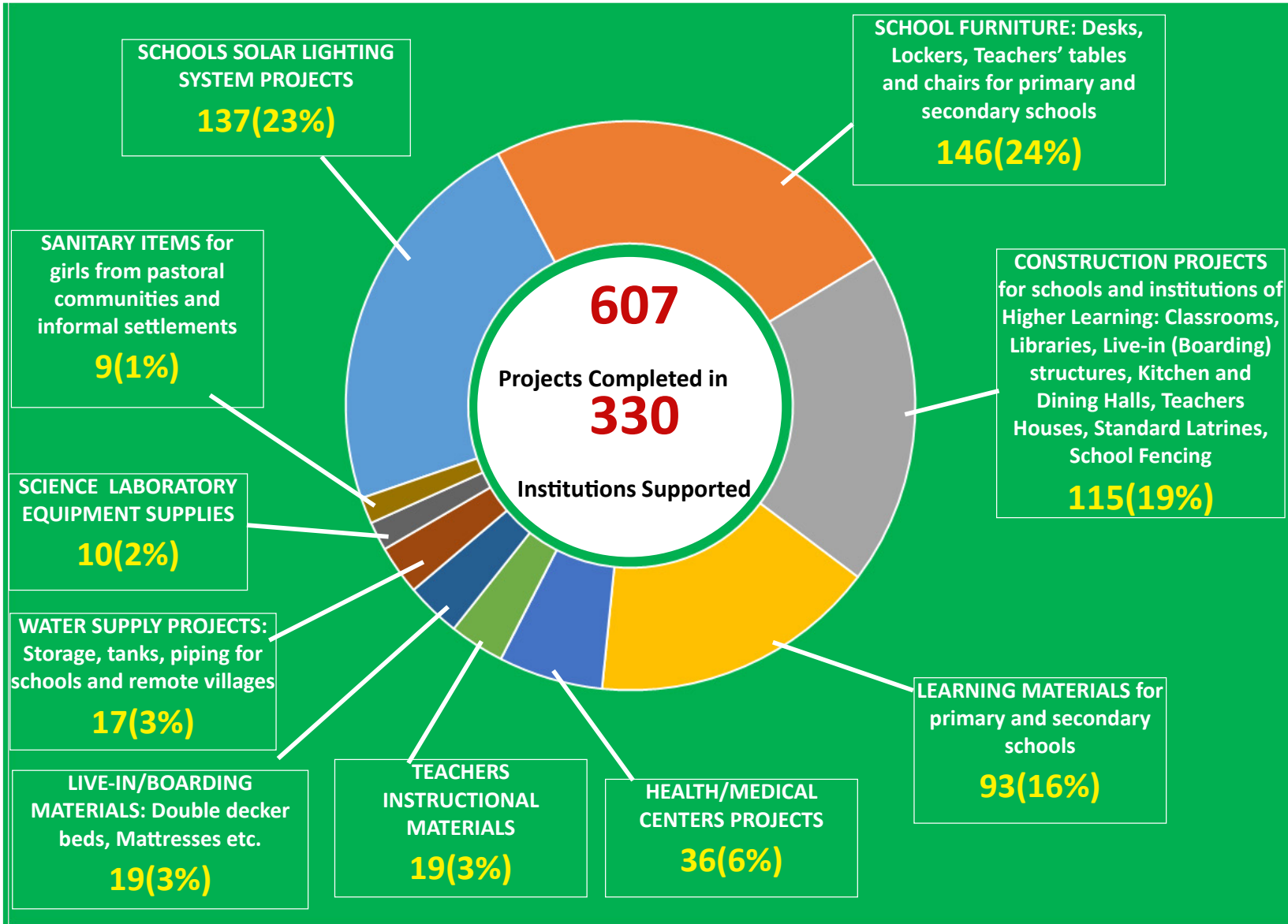
**191,496** Pupils and Students lives impacted



# SHALOM-SCCRR SCHOOL EDUCATIONAL DEVELOPMENT PROJECTS ACHIEVEMENTS

## 2009-2022 SHALOM-SCCRR SCHOOL EDUCATIONAL/DEVELOPMENT PROJECTS IMPLEMENTED

13 Years of Advocating, Interventions and Supporting QUALITY EDUCATION for poor Children in the Marginalized violent Conflict Environments in Kenya, South Sudan, Sudan, Ethiopia, Somalia and Tanzania



## SHALOM-SCCRR PEACE EDUCATION ACHIEVEMENTS

**13,092** Peace club Members Empowered with Peacebuilding KNOWLEDGE and ANALYTICAL SKILLS

**54** Shalom Peace Clubs established and active in INTRA-SCHOOL, INTER-SCHOOL, COMMUNITY peacebuilding activities

**103** Peace Club Patrons Trained by Shalom-SCCRR and active in the Implementation, Management and Administration of Peace Clubs

**160,809** Pupils and Students Benefited and Engaged in Shalom Peace Education Program Implementation



Prof. Omoka Wanakayi and Rev. Dr. Patrick Devine, conducting a research focus Group on **Turkana-Dassenach Conflict: Causes and Consequences** at the Ilemi Triangle located at the Kenya-Ethiopia-South Sudan Interface.



Ms. Asha Awed MA, Project Officer empowering Women in Archer's Post, Samburu County, Northern Kenya, on **key analytical skills in Peacebuilding**.



Rev. Dr. Patrick Devine facilitating a workshop in Mombasa on Preventing and Transforming Religious Ideological Extremism, and Terrorism in Eastern Africa. He also presented the Shalom's Methodology for Achieving Tolerance, Inclusivity, and Positive Peace.



Austin Ngacha MA, Shalom-SCRR Project Officer, at Lokeke Village in West Pokot County, Kenya, conducting community educational forum on the four dimensions of conflict transformation.



# SHALOM-SCRR'S EMPOWERMENT CENTER ADDRESSING VIOLENCE AGAINST WOMEN AND CHILDREN



Esther Kibe MA, Shalom-SCRR Project Officer on the ground with women from marginalized communities in Northern Kenya



Rev. Dr. Patrick Devine, International Chairman, with Turkana women in Lodwar, Northern Kenya, envisioning a way forward for conflict transformation and how women can be empowered and actively involved.



Our team led by Judy Akedi MA, on a field visit at Kariobangi Informal Settlement (Slum) in Nairobi, engaging women and children to identify the appropriate interventions. **Women and children in the informal settlements experience many forms of violence that heavily impact on them socially and economically.**



Shalom-SCRR's Ilhan Ali Salah BA (MA Candidate), guiding women from Riruta urban informal settlement in an interactive group discussion on the existing frameworks for conflict prevention in their areas.

# SHALOM-SCRR SCHOOL EDUCATIONAL DEVELOPMENT PROJECTS ACHIEVEMENTS



Shalom-SCRR funded Classrooms block at Santur Primary School, in Marsabit, Northern Kenya, set up to provide learning spaces to more than **370 girls and boys** who live under extreme poverty and marginalization that impedes their potential in academic success.



Our Logistics Team delivering **School Educational/Development Materials** at Amaiya Primary (having to cross rivers and terrains to reach the school in Samburu County Kenya).



Fr. Oliver Noonan MA, during a visit at Kimkasa Primary School, Nakuru, Kenya to inspect a completed classroom construction funded by Shalom-SCRR in November 2021. **The school and community were very grateful to Shalom friends and Donors for the very much needed support.** Kimkasa is one of the areas that has experienced worst post-election ethnic-based violence in Kenya.



The Good Shepherd Peace Centre, **South Sudan supported by Shalom-SCRR** with fully accessorized Solar Lighting System - enough to power the whole institution.

## Conclusion

We are proud of our achievements and the impact we have had over our first **13** years of operation in Eastern Africa. This publication is our humble means of celebrating our first decade in the service of marginalised communities in conflict zones. We thank our **funders** who have made all this possible, along with our **strategic partners** and collaborators across continents. We appreciate the efforts and dedication of **our team members** - current and past - and the support and encouragement of many **organizations** and **individuals** in **Eastern Africa, the USA, Ireland, Northern Ireland / UK, and elsewhere**. The contributions of Shalom-SCCRR **Boards of Governance and their Advisory Boards** worldwide have been exceptional in ensuring the realization of our vision and mission. Please continue sharing your wisdom and overview, your experience, your prayers, and your funding, into the future to enable us to develop and to achieve even greater impact.

**SHALOM, SALAAM, SALAMU, SALEM**

**Rev. Oliver Noonan, MA - Shalom-SCCRR Executive Director**

**Prof. W.K. Omoka, PhD - Shalom-SCCRR Director of Research**

**Mr. Godfrey Okoth, MA - Shalom-SCCRR Director of Programs**

**Mr. Francis Mwangi, MA - Shalom-SCCRR Monitoring, Evaluation, Research and Learning Officer**

**Rev. Dr. Patrick. R. Devine - Shalom-SCCRR International Chairman/Founder**

## Board of Advisors

Patrick Grace

Maurice Regan

Dave McWilliams

Michael Clune

Lorenzo Vascotto

Joeseph J. Pollaci

Dr. Richard Stock

John Caruso

John Fitzpatrick

Paul O'Dwyer

Joseph G. Genovesi

## Donor Information, USA

Overall, your support allows the SHALOM-SCRR to address conflict resolution in Africa by **Researching** the underlying causes of persistent conflict and poverty; **Training** community leaders in conflict transformation; **Influencing** government policy at the local and national levels; **Empowering** local religious and civic organizations to address conflict and promote peace; **Introducing** peace education into schools; Construction of inter-ethnic and interreligious schools; and the **Installation** of solar energy.

You may send donations, through our website

[www.shalomconflictcenter.org](http://www.shalomconflictcenter.org)

or via check/ money order:

made payable to "Shalom Center of Africa:

Shalom Center of Africa

117 West 28th Street- 2nd FL

New York, NY 10001

We invite you to stay connected to The Shalom Centre of Africa. Follow us on

[www.shalomconflictcenter.org](http://www.shalomconflictcenter.org) and Facebook.

Thank you again for your support.

Sincerely,



Rev. Dr. Patrick Devine, International Chairman, Founder

**USA Cell:** +1 917 922 6649, **Africa Cell:** +254 733 612 503, **Europe Cell:** +44 7741 260 743

**Email:** pdevine@shalomconflictcenter.org

**CC:** Mr. Joseph J. Pollaci, Chairman (SCOA-USA)

*The Shalom Centre of Africa is a 501 (c)(3) nonprofit organization, EIN 46-1491594, your contribution is tax deductible to the extent permitted by law. No goods or services were provided in exchange for your generous financial donation.*

[www.shalomconflictcenter.org](http://www.shalomconflictcenter.org)

The Shalom Centre of Africa

117 West 28th Street

New York, NY 10001

**GREAT BRITAIN**

Shalom Center for Conflict Resolution and Reconciliation - London

Att: Bernadette Morahan

29B Montague St, London WC1B 5BW

United Kingdom.

Email: bernadette.morahan@invennt.com

Mobile (UK): 0044 20 72994268

---

**R.o. IRELAND**

Shalom Center for Conflict Resolution and Reconciliation- Ireland

Att: Matthew Molloy, LLB

3 Mount Eaton,

Taylor's Hill,

Galway,

H91AXR7.

Email: mmolloygalway@gmail.com

Mobile (Ireland): 00353 868149782

Att: Ciaran King

Email: cking@etapcp.com,

Mobile (Ireland) 00353 87 9320217

---

**N. IRELAND**

Shalom Center for Conflict Resolution and Reconciliation – N. Ireland/UK

Att: Betty McNicholl

319 Clooney Road,

Limavady,

Londonderry

Bt49 9je.

Email: betty.mcnicholl@btopenworld.com

---